



BMX Australia Track Guidelines

2015

CONTENTS

Introduction	3
BMXA Track Guidelines	4
BMXA Track Amenities	5
5m Start Hill Specifications	6
8m Start Hill Specifications	10

INTRODUCTION

The Track Guidelines (the Guidelines) have been developed by BMX Australia (BMXA) and provide guidelines for State Associations and Clubs for the development of new and existing BMX Tracks across the country and are to be used also by State Officiating Directors in the sanctioning of new BMX Tracks.

As the governing body for the sport in Australia, BMXA is committed to promoting safety, through various education and training initiatives and through the publication of other guideline materials, including The BMX Australia Rule Book..

The safe operation and management of tracks and events, remains the responsibility of Clubs and Event Promoters.

BMX Australia has set minimum requirements for National events including the National Championships and National Series which includes a starting hill.

BMX Australia recommends that if a club or State has aspirations of hosting a National event then the track will need to meet these standards among other things as outlined in the table below. BMX Australia recommends that any upgrade of a track or the construction of a track includes a 5 metre start hill.

Please see below for specific details on the construction of a 5m and 8m start hill.

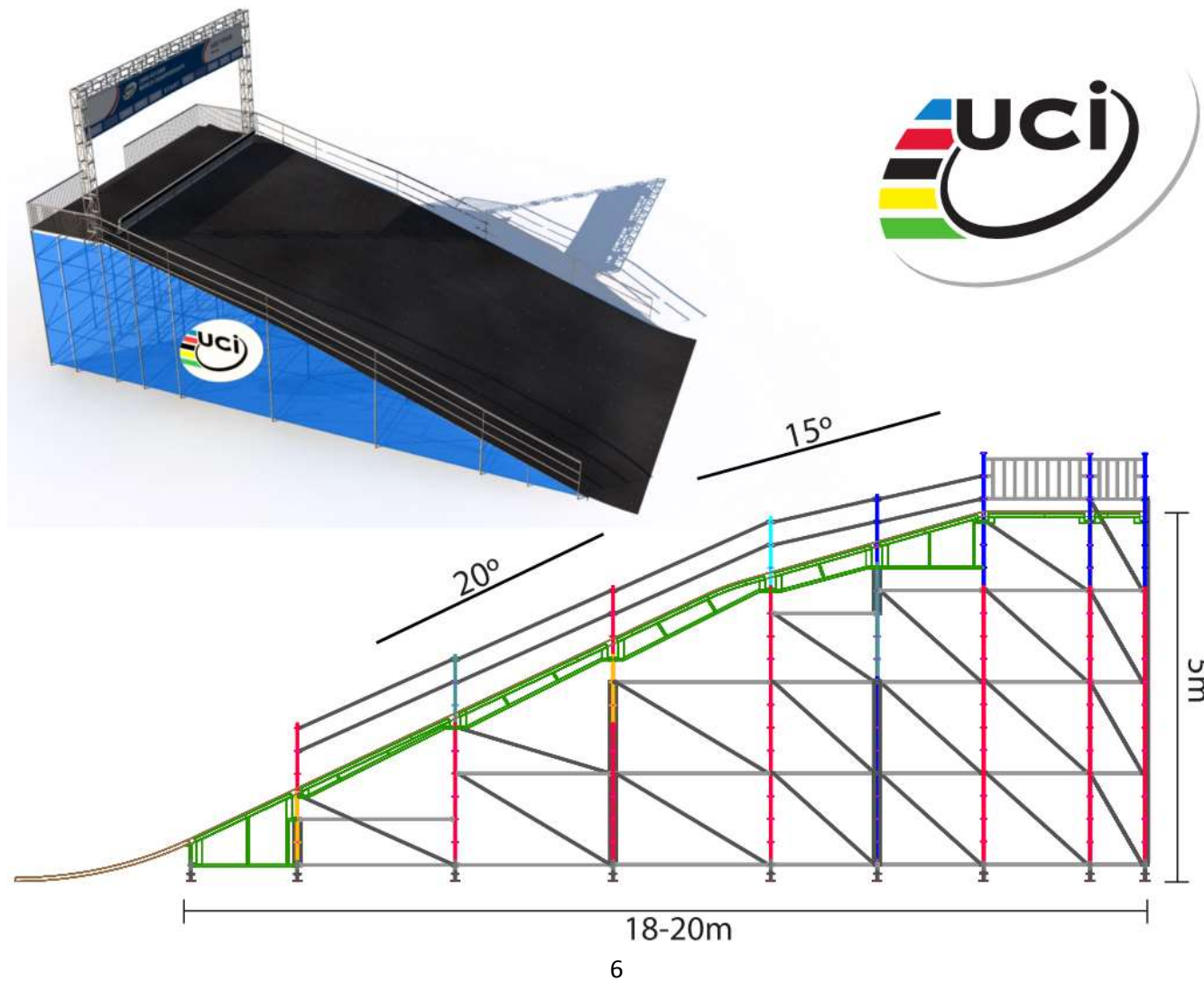
BMXA TRACK GUIDELINES

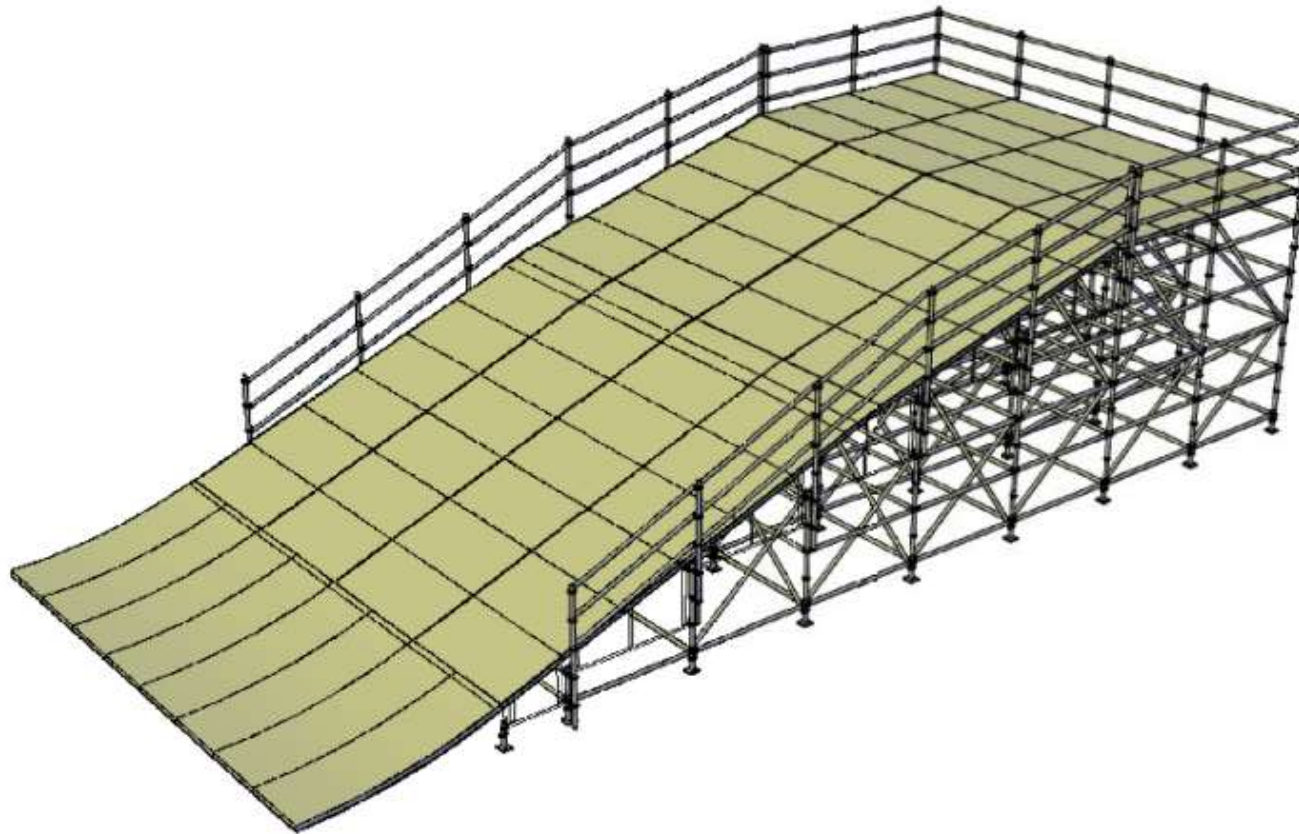
	1: Continental Championships	2: National Championships	3: National Series	4: State Championships / Series	5: Regional	6: Club	
CLASS RACE	CC	CN	C1	Class S	Class R	Class C	
Starting Hill	Height: 5m Width: 8m			Height: 2.5m Width: 8m			
Total Length of Track	300M – 400M						
Width of Track	1 st Straight 8m All other straights: 6m 1 st Turn: 8m Turns: 6m	1 st Straight 8m All other straights: 6m 1 st Turn: 6m Turns: 6m					
Number of Straights	Minimum 4						
Minimum Number of Turns	3						
Starting Gate -Width -Height	7.3m wide 50cm high Slip resistant						
Length First Straight (minimum)	Men / Women: 70m Challenge: 60m			Men / Women: 60m Challenge: 60m			
Markings	White lines clearly marked on the track						
Transponder Cable	Start Hill and Finish Line			NO			
Fencing	On straights minimum 2m from track						

BMXA TRACK AMENITIES

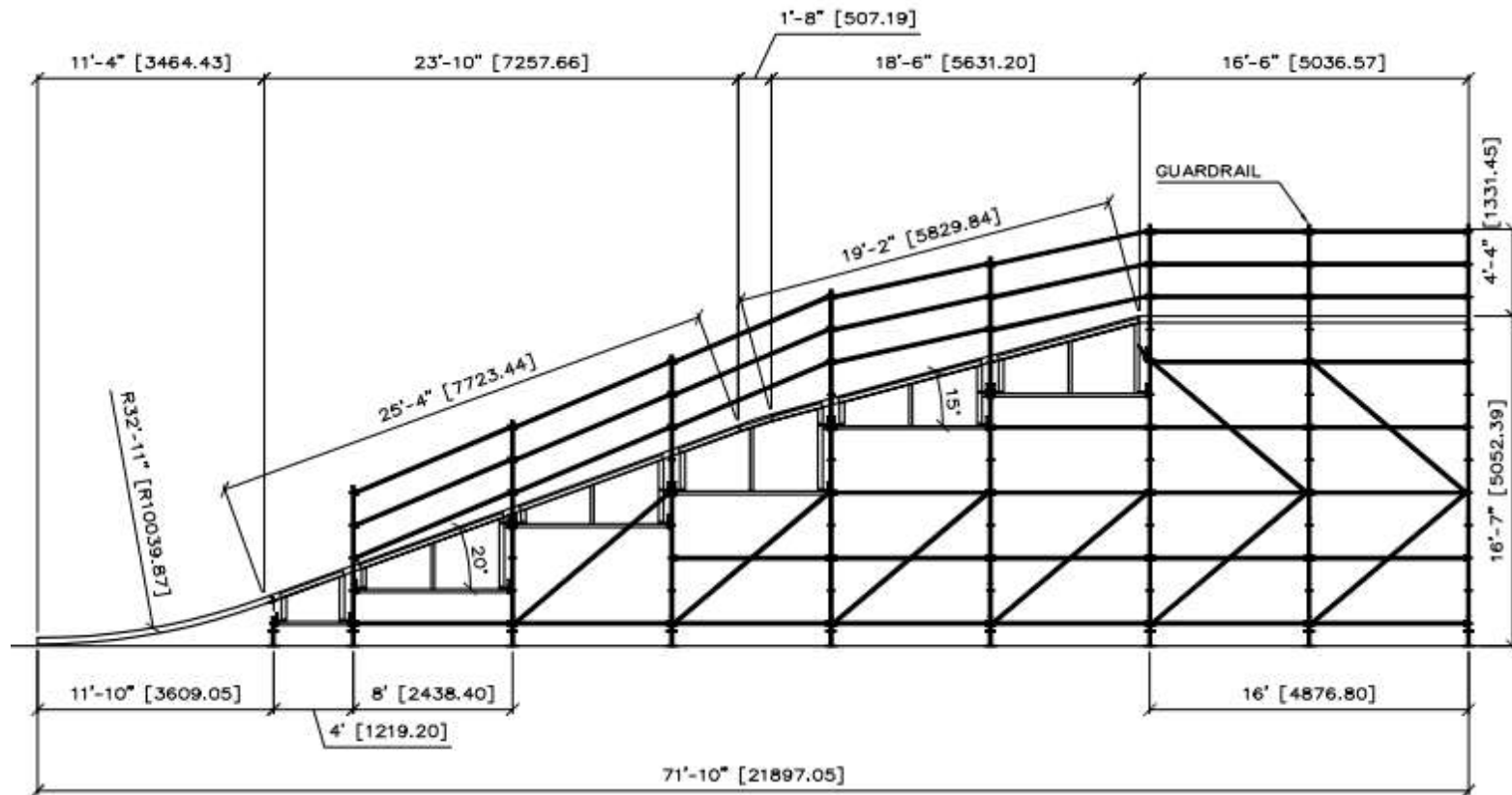
	1: Continental Championships	2: National Championships	3: National Series	4: State Championships / Series	5: Regional	6: Club
CLASS RACE	CC	CN	CN	Class S	Class R	Class C
Staging	(10x8) x 2 1 of which covered	10x8 covered		10x8 preferred		
Grandstands Available space for seating	3000		1000	500	250	250
Lights	YES		Preferred	NO		
Available parking spaces	1000		500	250	100	50
Drug Testing Area	YES			If Required	NO	

5m START HILL SPECIFICATIONS



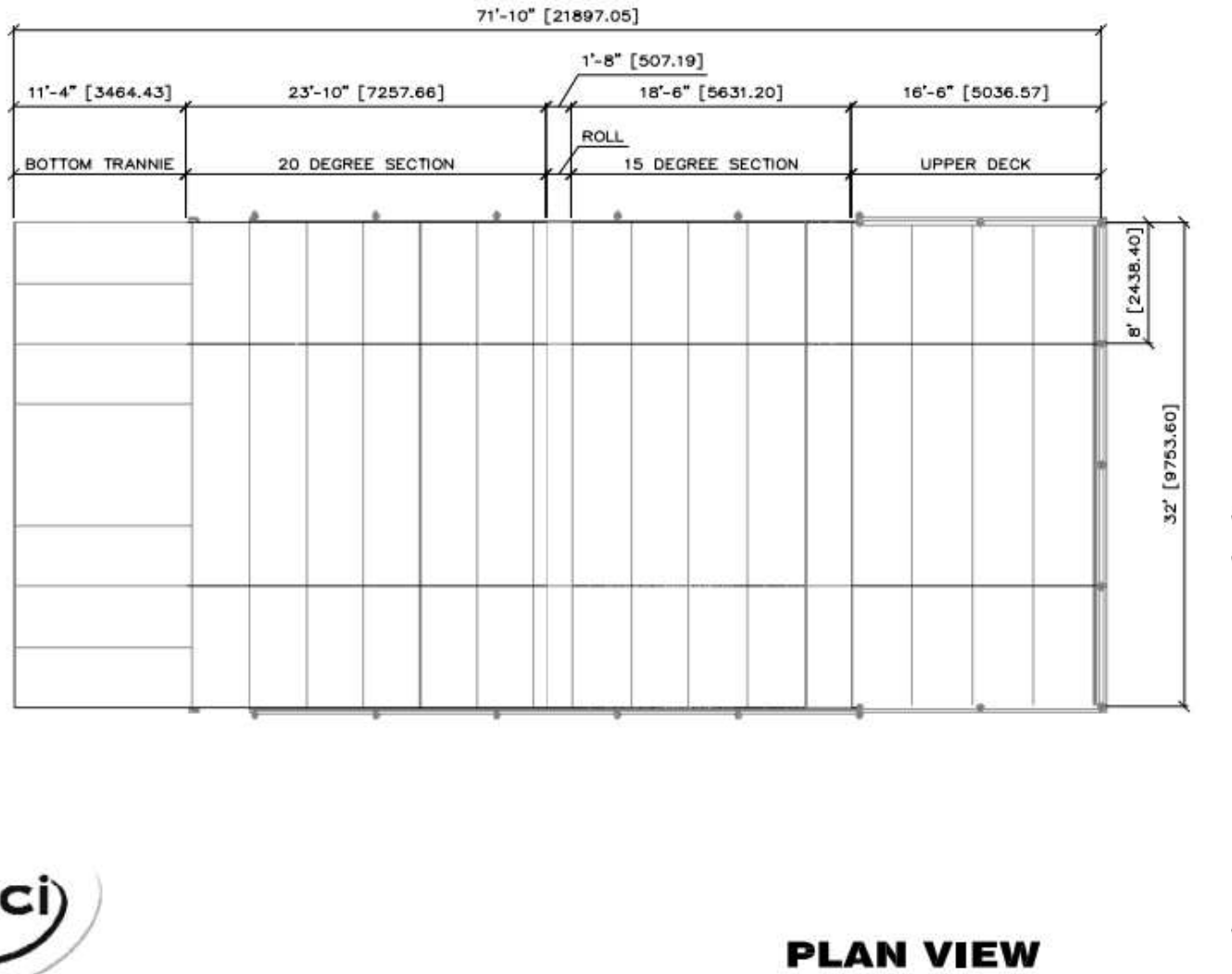


ISOMETRIC VIEW



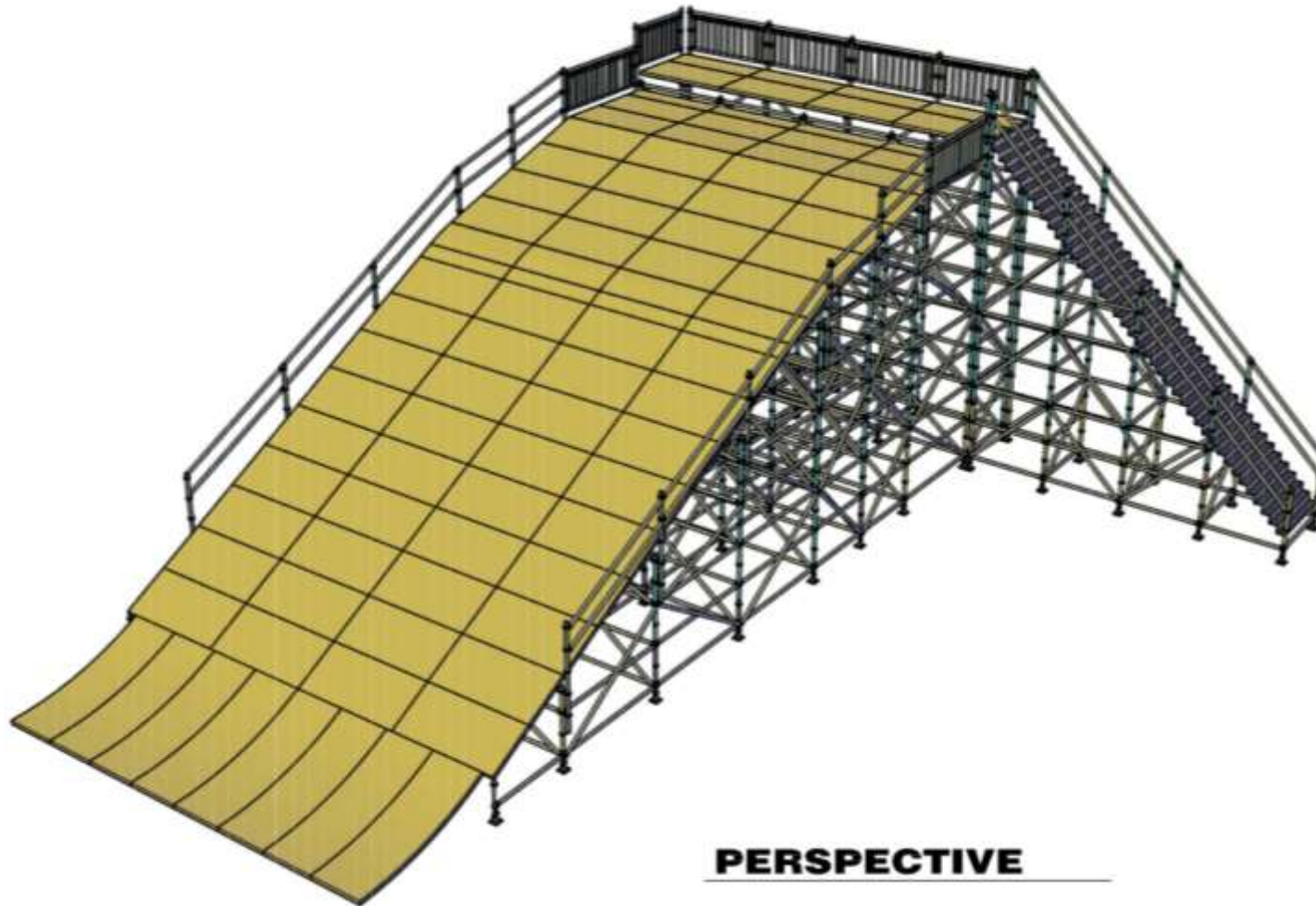
ELEVATION VIEW

BMX START RAMP

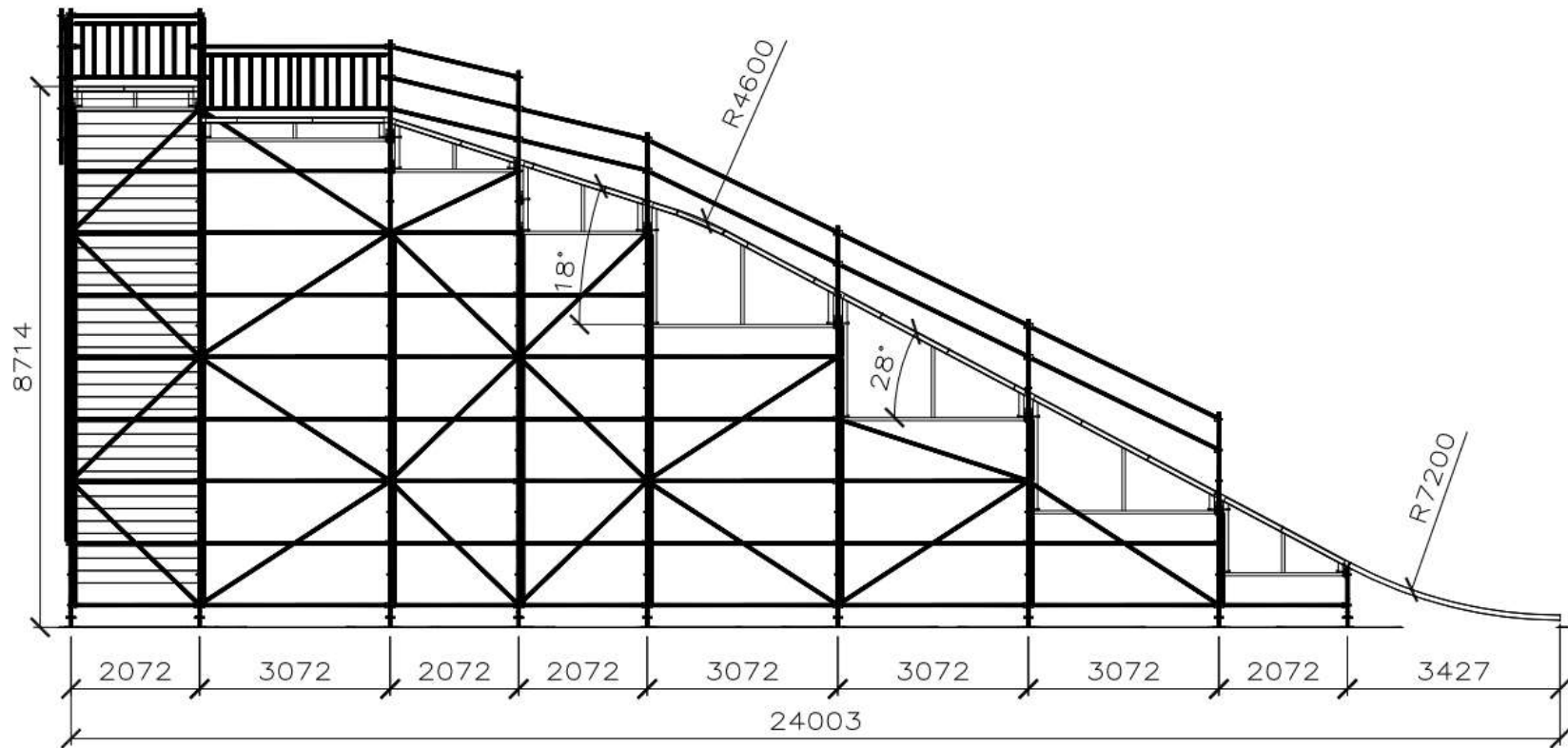


PLAN VIEW

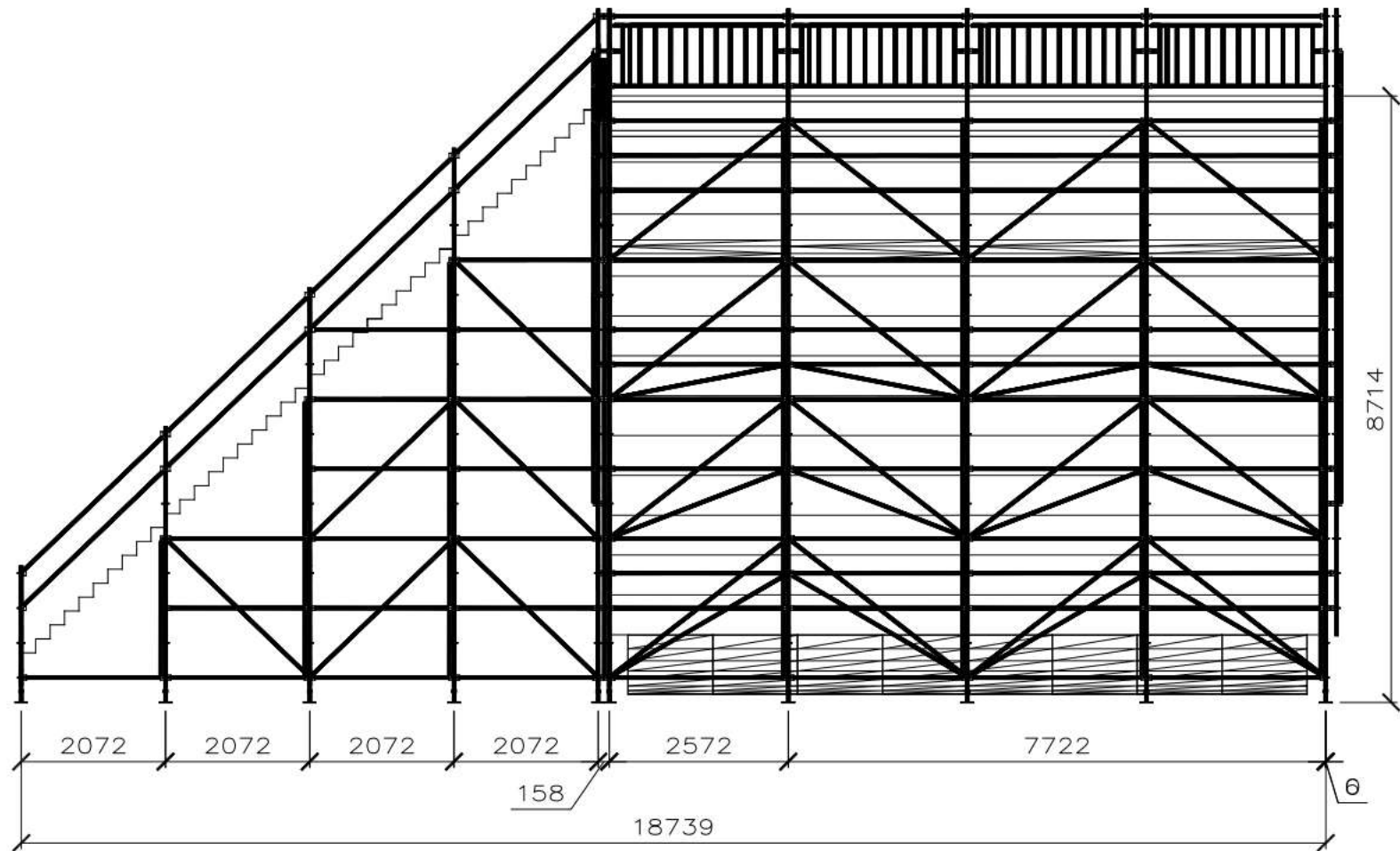
8m START HILL SPECIFICATIONS



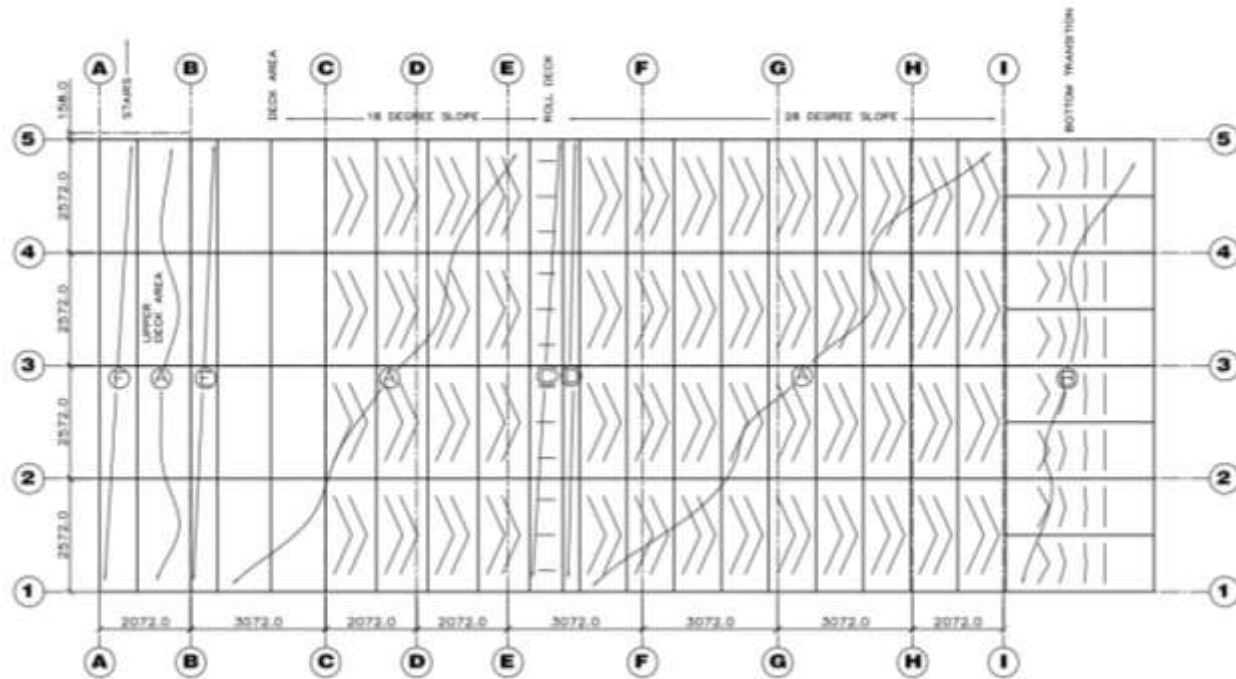
PERSPECTIVE



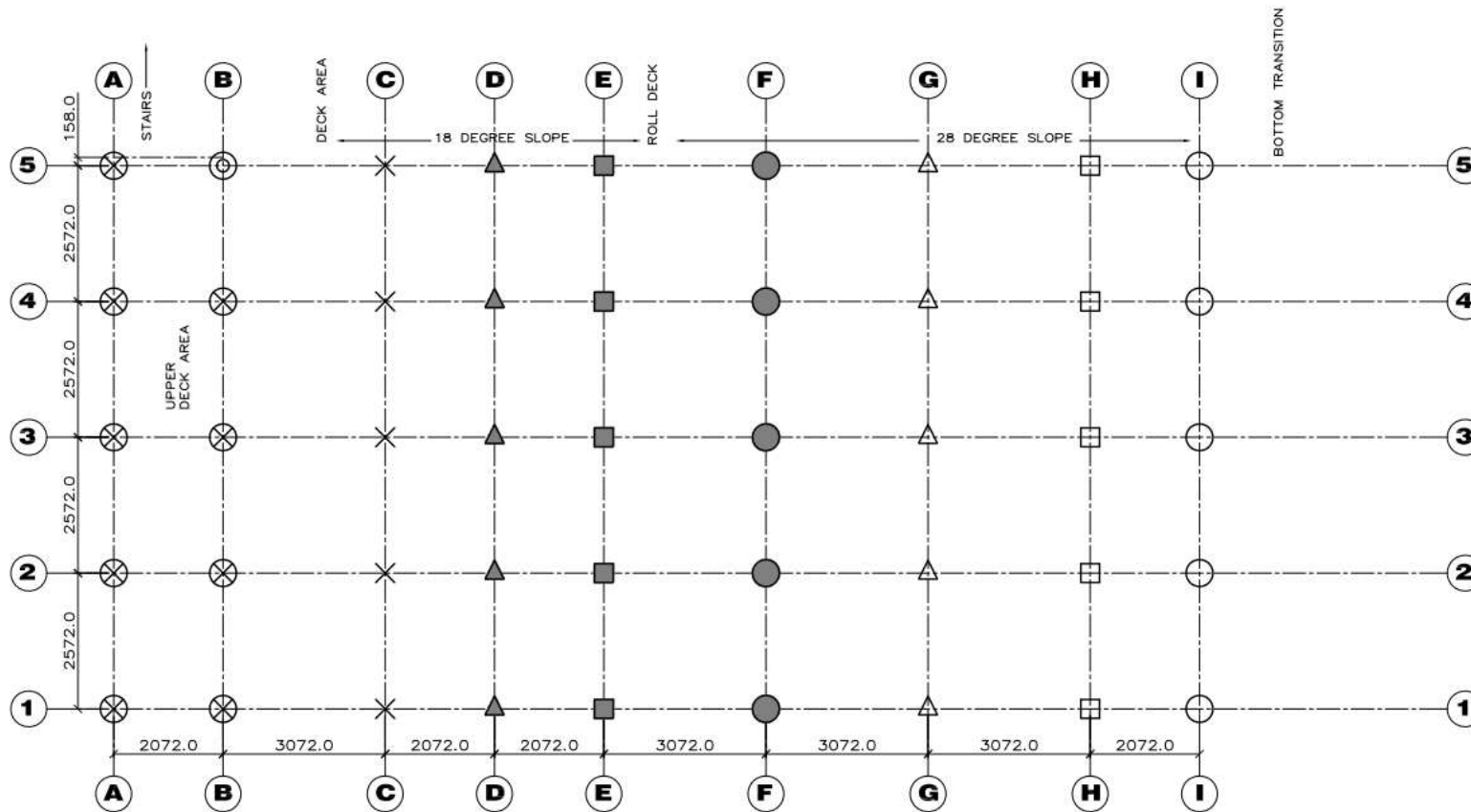
SIDE ELEVATION



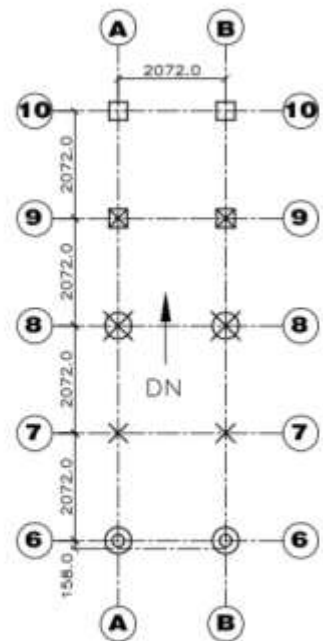
REAR ELEVATION



SURFACE PLAN

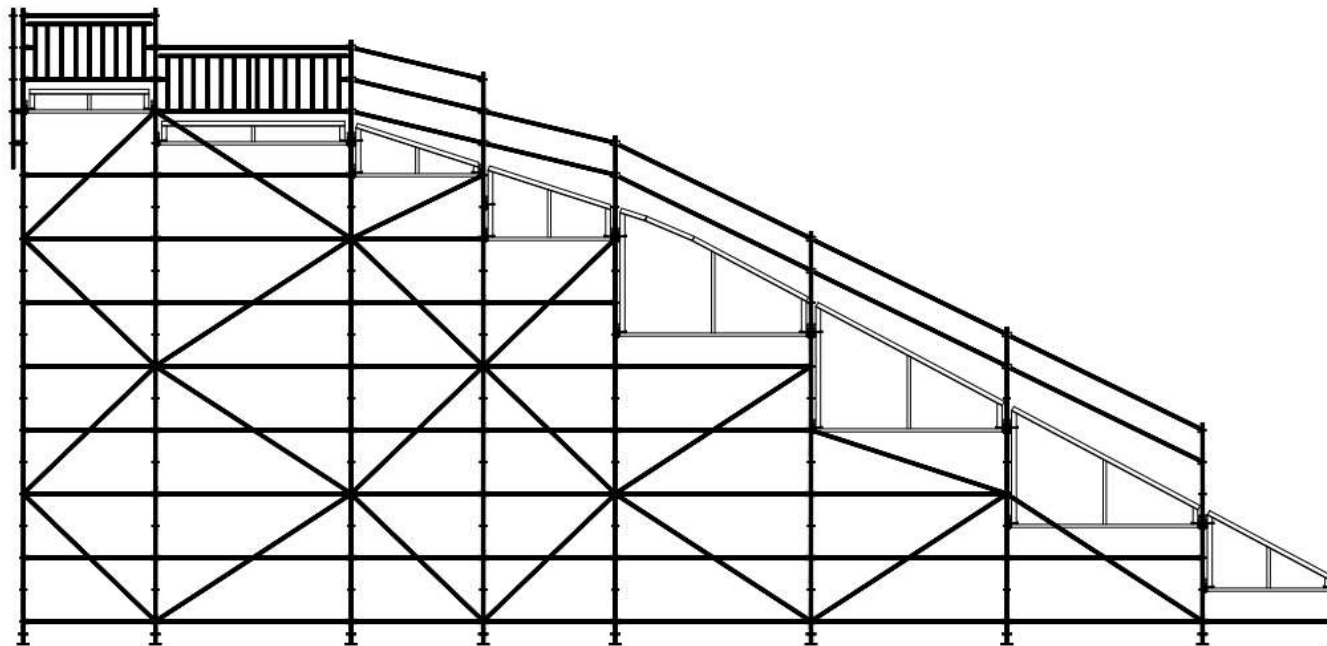


BASE PLAN



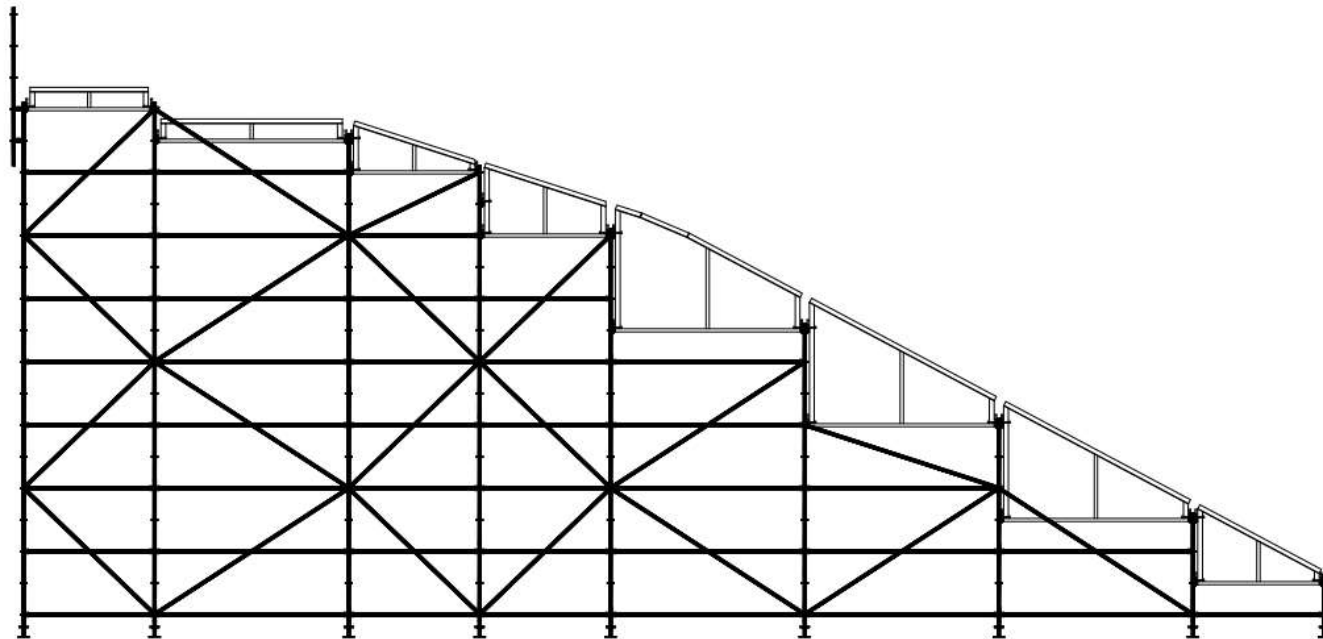
BASE SCHEDULE	
○	SJ + BC + 0.5M
□	SJ + BC + 1.5M
△	SJ + BC + 1M + 2M
●	SJ + BC + 0.5M + (2)2M
■	SJ + BC + (3)2M
▲	SJ + BC + 1M + (3)2M
×	SJ + BC + 1.5M + (3)2M
⊗	SJ + BC + (4)2M
⊙	SJ + BC + 1.5M + (4)2M
⊗	SJ + BC + 1.5M + (2)2M
⊗	SJ + BC + 1.5M + 2M

STAIR BASE



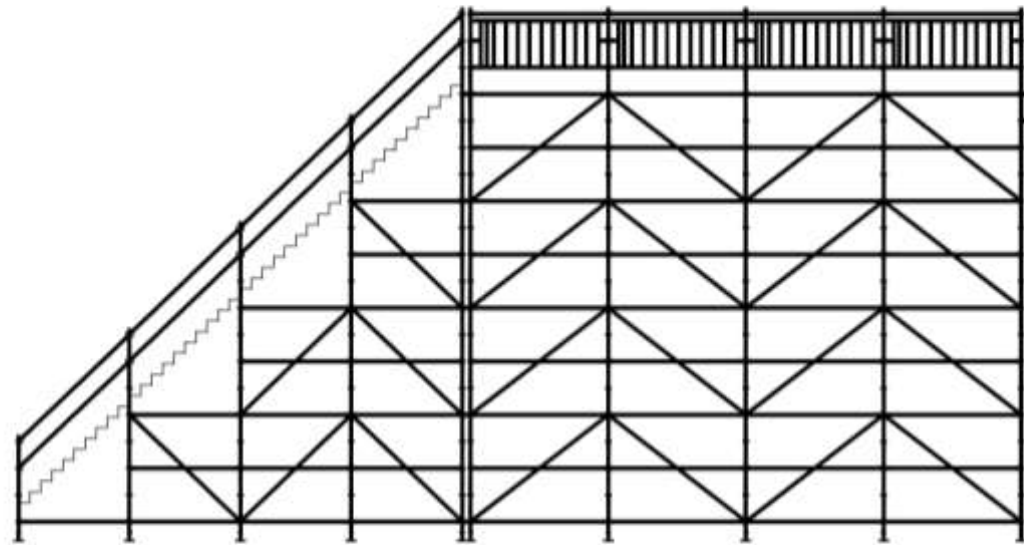
SECTION 1

NOTE:
ADJUST DIAGONALS PER
AVAILABLE CONNECTIONS



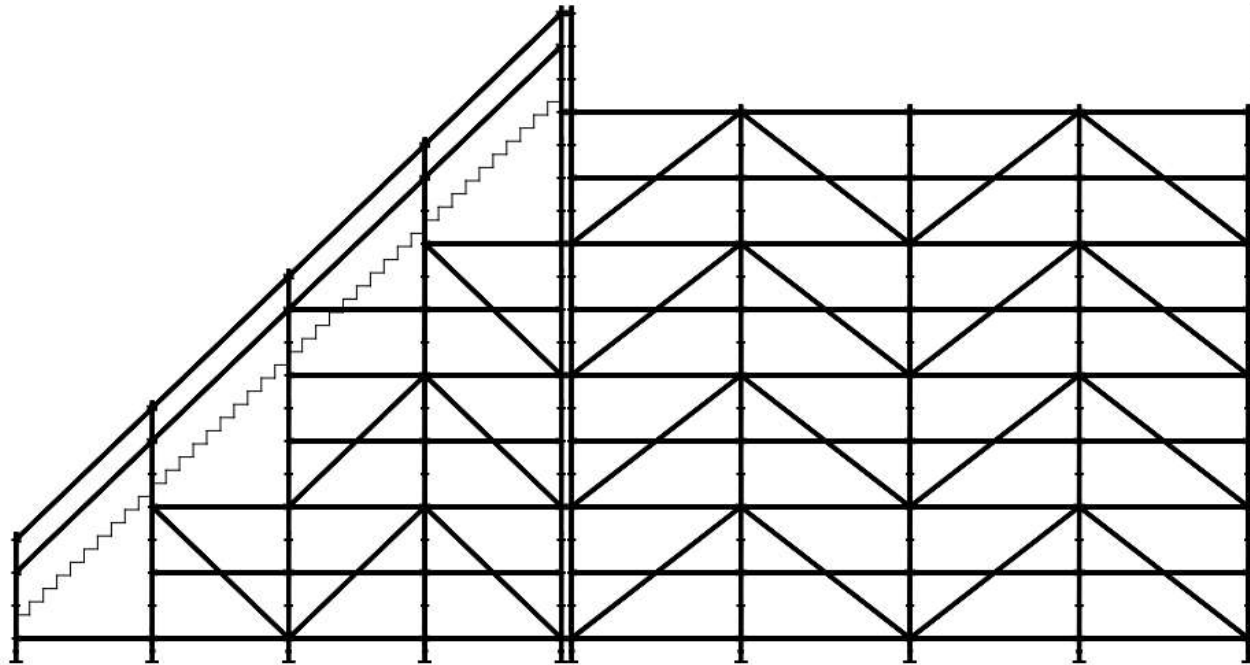
SECTION 2

NOTE:
ADJUST DIAGONALS PER
AVAILABLE CONNECTIONS



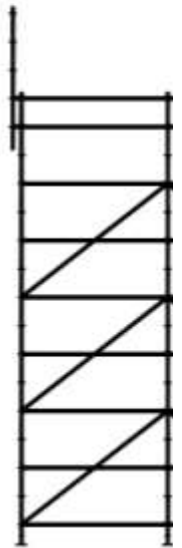
SECTION A

NOTE:
ADJUST DIAGONALS PER
AVAILABLE CONNECTIONS

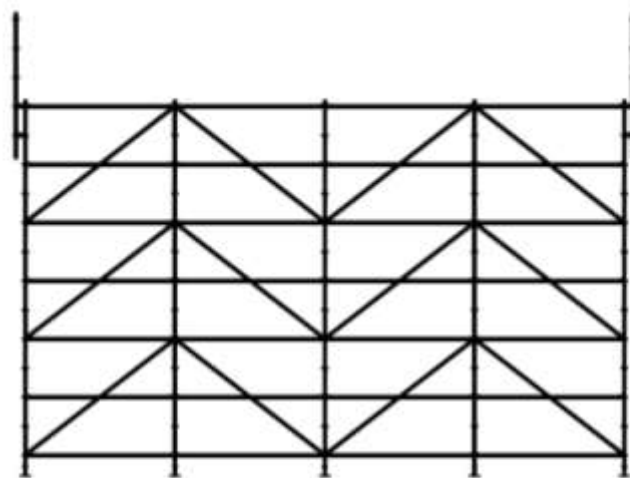


SECTION B

NOTE:
ADJUST DIAGONALS PER
AVAILABLE CONNECTIONS

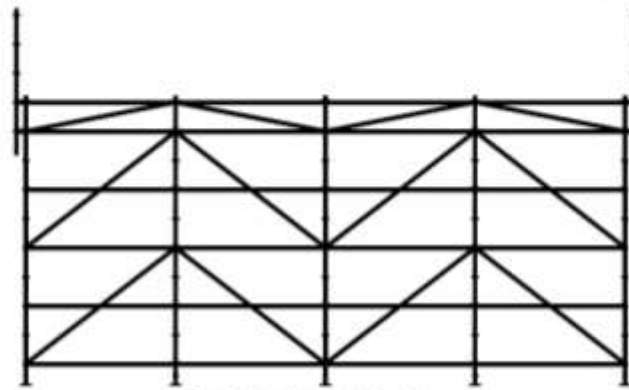


SE

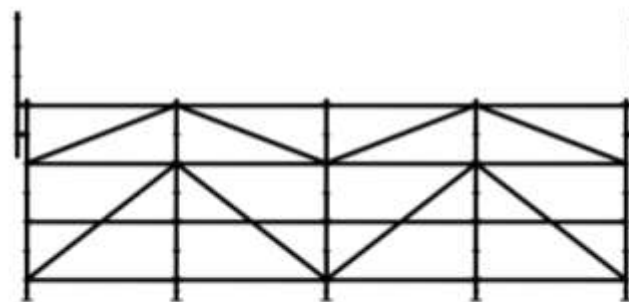


SECTION E

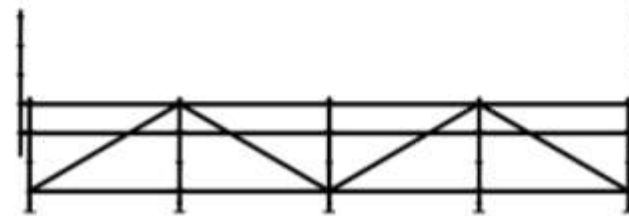
NOTE:
ADJUST DIAGONALS PER
AVAILABLE CONNECTIONS



SECTION F



SECTION G



SECTION H



SECTION I